

# DELTA $\Delta$ ANALYTICAL

## PRODUCT SPECIFICATION

### Cold Fusion™ FoodState® Chromium Concentrate

Product No. 100015

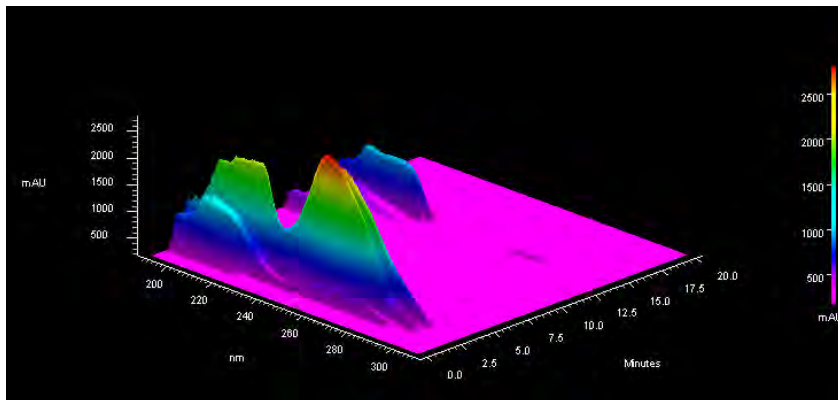
#### PRODUCT CHARACTERISTICS

Botanical Name  
Plant Part  
Description  
Flavor  
Preservatives

#### SPECIFICATION

*Saccharomyces cerevisiae*  
Whole Plant  
Fresh/Frozen *S. cerevisiae*  
Typical of *S. cerevisiae*  
None

#### Nutrient Peptide Chromatogram



#### Finished Raw Material



#### PHYSICAL DATA

Residual Moisture  
Bulk Density (Tapped)

#### METHOD

Thermogravimetric  
USP28<616>

#### SPECIFICATION

$3.5 \pm 1.5\%$   
 $0.70 \pm 0.10$  g/mL

#### NUTRITION INFORMATION

Chromium

ICP

0.2% Minimum

Calories (per 100 grams)

Calculation

218 kcal

Total Fat

2% Maximum

Total Carbohydrate

10% Minimum

Protein

40% Minimum

#### MICROBIOLOGICAL PROFILE

Total Aerobic Plate Count

AOAC 966.23

10,000 per Gram Maximum

*E. Coli*

AOAC 991.14

Less than 10 per Gram Maximum

Total Coliforms

AOAC 991.14

1,000 per Gram Maximum

Yeast & Mold

FDA-BAM 7<sup>th</sup> Ed.

300 per Gram Maximum

#### PACKAGING and STORAGE

Double poly bag with desiccant packs in a fiber drum. Cool dry storage (15-30°C).

Pack Size: 50 kgs

ISSUED DATE: 11/16/05