

DELTA Δ ANALYTICAL

PRODUCT SPECIFICATION

Cold Fusion™ FoodState® Phosphorus Concentrate

Product No. 100035

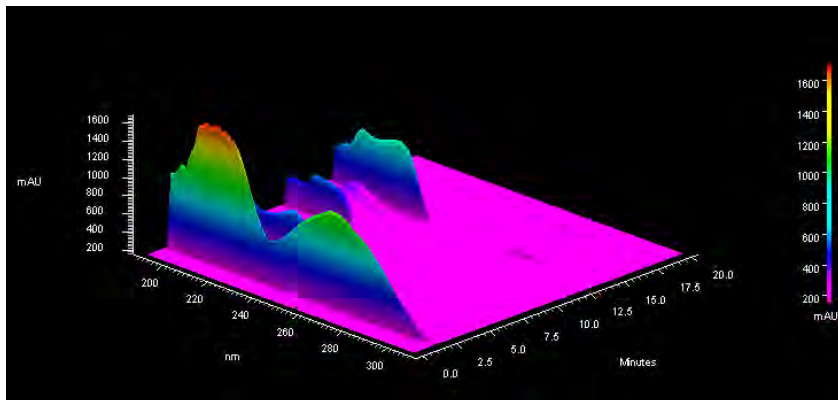
PRODUCT CHARACTERISTICS

Botanical Name
Plant Part
Description
Flavor
Preservatives

SPECIFICATION

Saccharomyces cerevisiae
Whole Plant
Fresh/Frozen *S. cerevisiae*
Typical of *S. cerevisiae*
None

Nutrient Peptide Chromatogram



Finished Raw Material



PHYSICAL DATA

Residual Moisture
Bulk Density (Tapped)

METHOD

Thermogravimetric
USP28<616>

SPECIFICATION

$3.5 \pm 1.5\%$
 $0.75 \pm 0.10 \text{ g/mL}$

NUTRITION INFORMATION

Phosphorous

Calories (per 100 grams)
Total Fat
Total Carbohydrate
Protein

ICP

Calculation

5.0% Minimum

258 kcal
2% Maximum
20% Minimum
40% Minimum

MICROBIOLOGICAL PROFILE

Total Aerobic Plate Count
E. Coli
Total Coliforms
Yeast & Mold

AOAC 966.23
AOAC 991.14
AOAC 991.14
FDA-BAM 7th Ed.

10,000 per Gram Maximum
Less than 10 per Gram Maximum
1,000 per Gram Maximum
300 per Gram Maximum

PACKAGING and STORAGE

Double poly bag with desiccant packs in a fiber drum. Cool dry storage (15-30°C).
Pack Size: 50 kgs

ISSUED DATE: 11/16/05